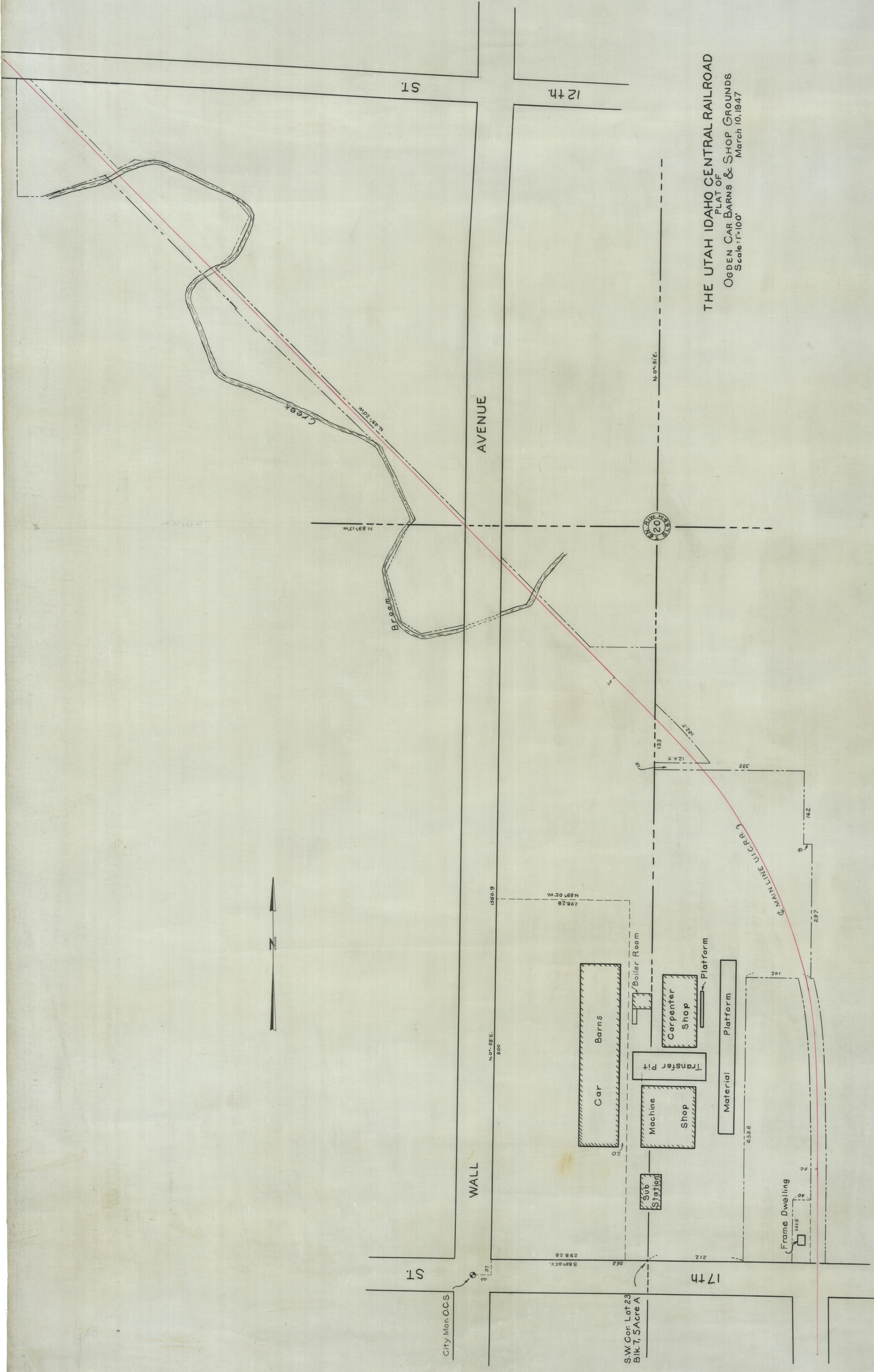


GREEN STATION
0181 55



THE UTAH IDAHO CENTRAL RAILROAD
 PLAT OF
 OGDEN CAR BARN & SHOP GROUNDS
 March 10, 1947
 Scale: 1" = 100'

City Mon. O.C.S.

S.W. Cor. Lot 23
Blk. 7, 5Acre A